

The easiest way to fix this problem is to find the non working device in your computers Device Manager and **uninstall the device and reinstall it by detecting new hardware**. This process can be applied fix other hardware devcies that are not shown or recognised by Windows OS.

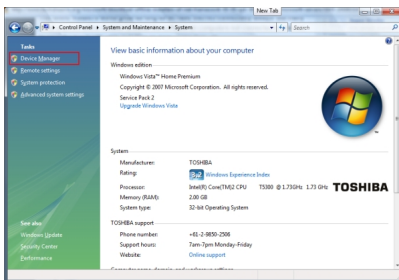
The instruction are based on Windows Vista and 7, but similar procedure applies to Windows XP.

1. Click Windows start

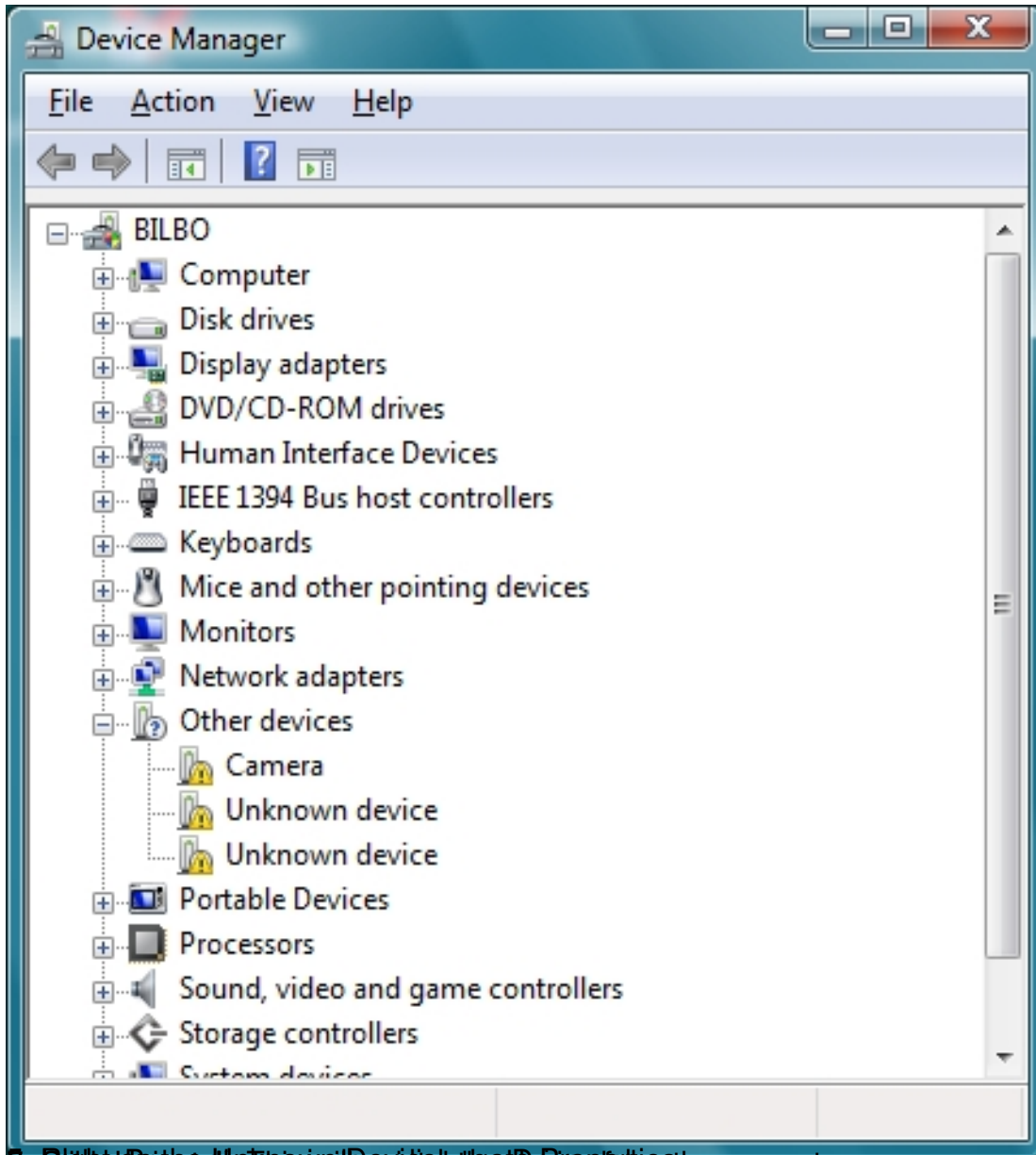
2. Goto Control Panel > System and Maintenance > System

3. In this window click Device Manager

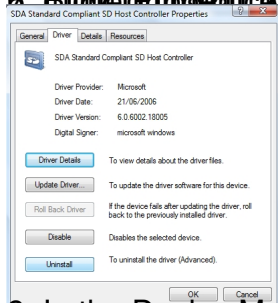
You can also get to this window by clicking Windows start > right click Computer > click Properties



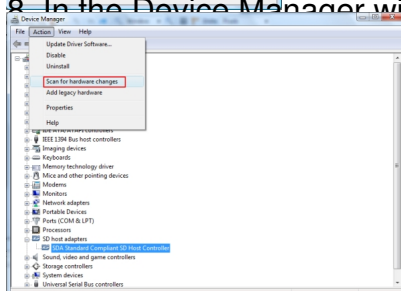
4. In the Device Manager look for devices with yellow exclamation mark. Similar to the image below



7 - Right click on the Unknown device and click the ID Properties the computer



8 - In the Device Manager window click Action > Scan for hardware changes



9 - Following the completion of the scan to install the software will be presented to install the device

Written by Administrator

