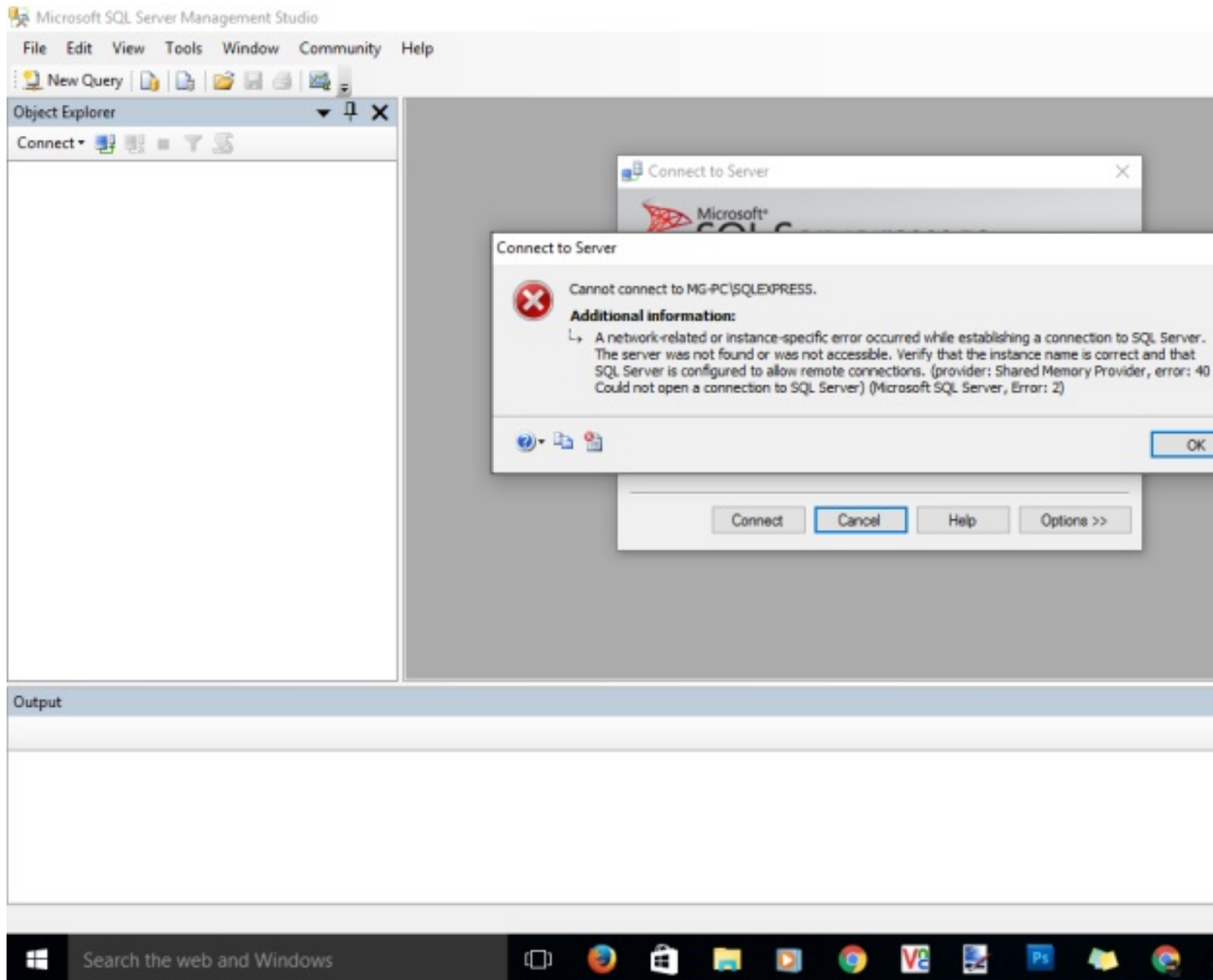


Written by Tom

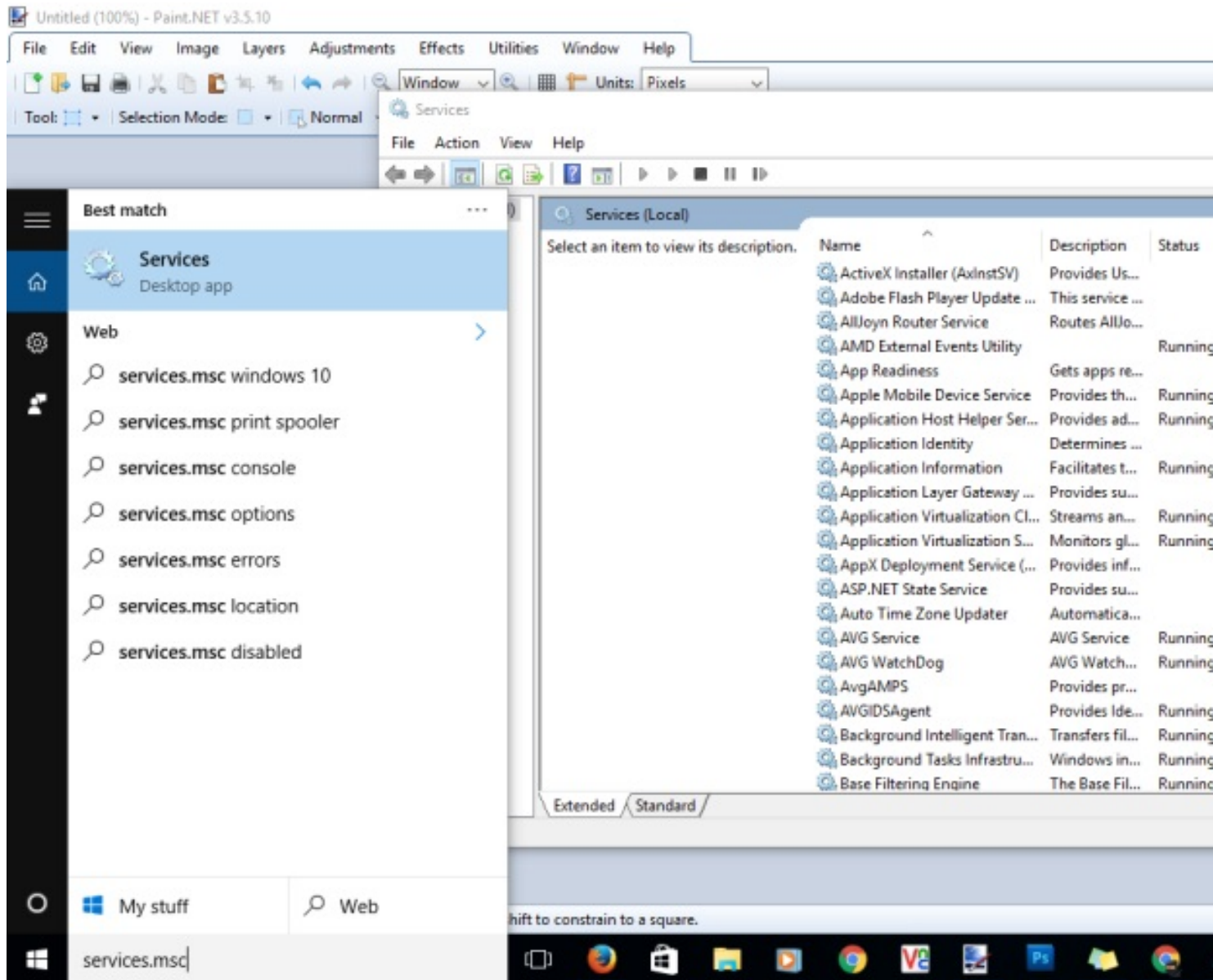
---

If you are getting an SQL server error "Cannot connect to .../SQLEXPRESS"



Written by Tom

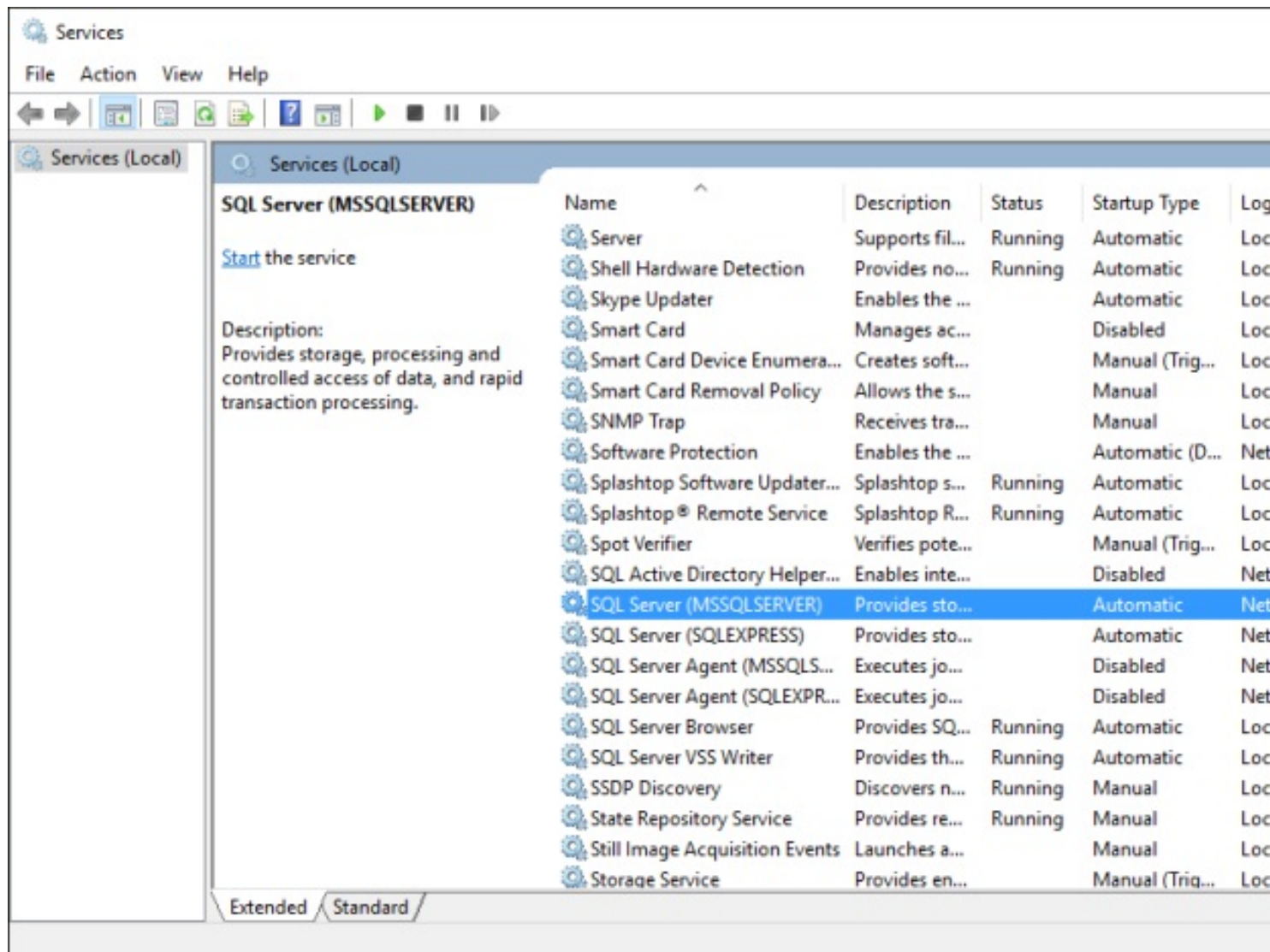
Type in the search box services.msc and open the Services window.



Written by Tom

---

Scroll to SQL Server and double click to open it

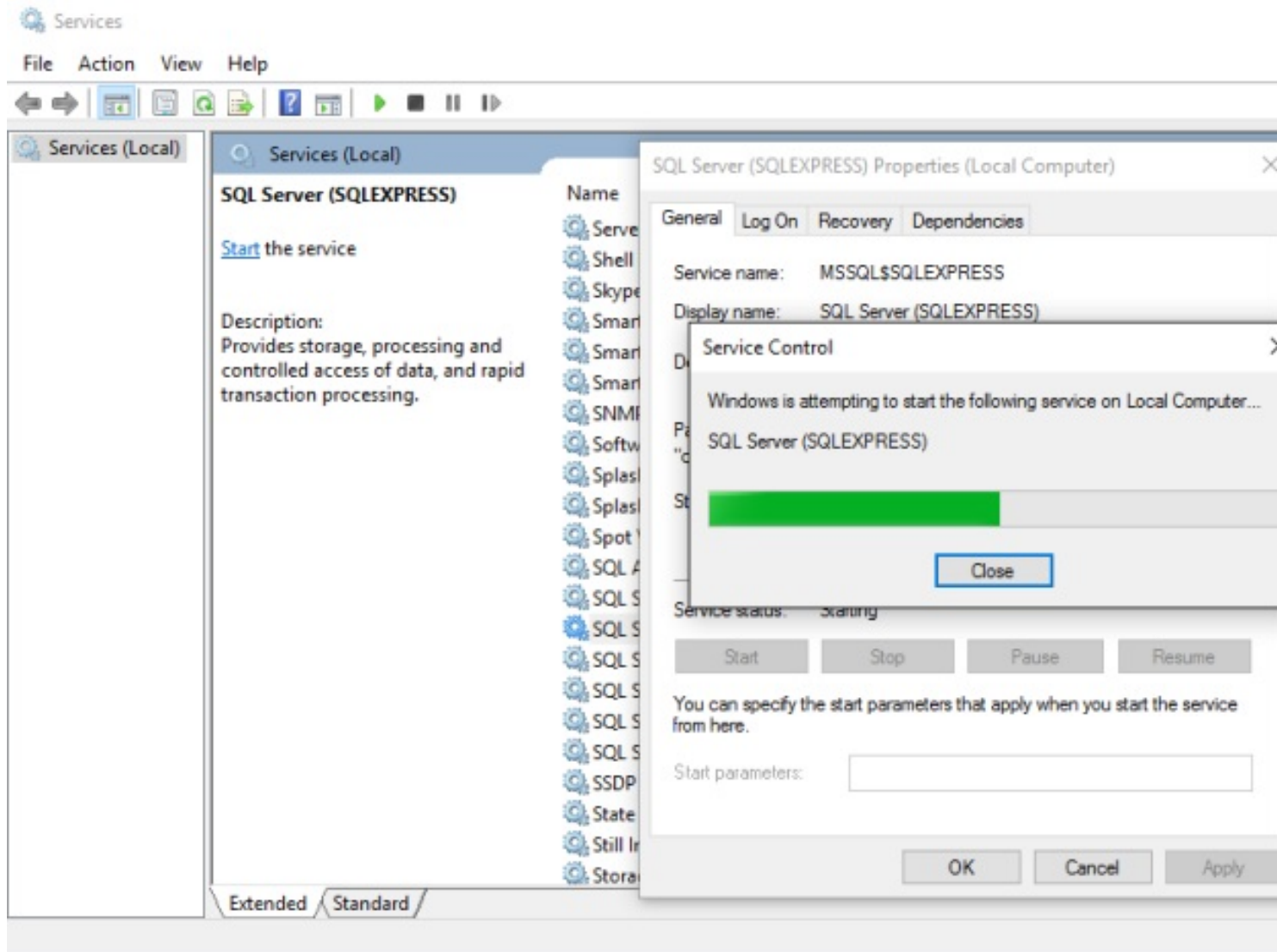


## My Easy PC we are here to help you... - SQL Server error - Cannot connect to SQL Server

Written by Tom

---

Click Start to start the service.



This will start the SQL Server service and you can connect to the server. You can watch the below video for the same process.

[Get your next Web Development](#)